

Contact ECT via...

- Telephone  
519-846-9412
- Mail  
P.O. Box 804  
Elora, ON N0B 1S0
- Email  
[mail@eloracommunitytheatre.on.ca](mailto:mail@eloracommunitytheatre.on.ca)
- On the Web  
[www.eloracommunitytheatre.on.ca](http://www.eloracommunitytheatre.on.ca)

What's Inside:

- Social Reading 2
- Auditions 3
- Interesting Information 4

## First Show of the Season Underway!

The Fall 2003 Production of *Dancing at Lughnasa* is now in rehearsal and tickets for this and the entire season are now for sale!

Cast members are from Guelph, Cambridge, Inverhaugh, Waterloo and Fergus, which shows how far actors will come for a great role.

### CAST

Agnes...	Jacqueline Gray
Chris...	Tracey Biggar
Gerry...	Jeff Dakin
Jack...	Ken Harkes
Kate...	Lauren Istevold
Maggie...	Erin Murphy
Michael...	Carlo Adamo
Rose...	Nancy Forde

What a sterling cast! This show will be adjudicated In-Festival... we'll keep you updated as time progresses!

### PROPS NEEDED!

One way you can help, without working backstage, is to help with props. Here is the list of current props required. If you have any of these items or know where they can be borrowed (with due credit of course!), please call or email ECT attention Nadine Bell.

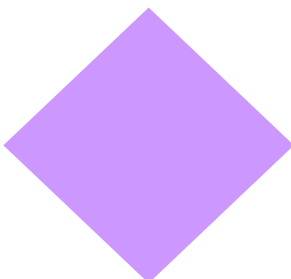
- ✚ Garden Seat with back (wooden or cement circa 1930)

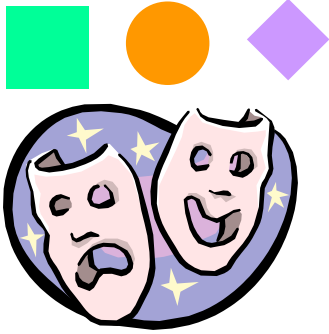
- ✚ Iron Range (early 20<sup>th</sup> century - a shell would be fine)
- ✚ Large turf box
- ✚ Oil Lamp
- ✚ Dresser set (hand-mirror, brush circa 1920's)
- ✚ Large 30's wooden radio with a rounded top (like a church window)
- ✚ Old tin containers for - tea, soap, corn meal, jelly, cornflour, salt, tapioca, sugar
- ✚ Old radio battery
- ✚ Small wooden spinning top & whip
- ✚ Old looking books/novels
- ✚ Old cane or walking stick (not metal or rubber)
- ✚ Tea pot - large - or kettle
- ✚ Ink well/bottle & fountain pen

If you would like to help backstage or would like to learn the art of ASMinG and would like to shadow someone during rehearsals and the run of the show, don't be shy! Contact us!

Season tickets can be purchased for \$30 for all three shows; *Dancing at Lughnasa*, *Cactus Flower* and *the Children's Hour*. Drop into the Fergus Grand Theatre, or call 787-1981 to order. Please note that it is cash or cheque only.

We look forward to seeing all members out during the season!





## Social Play Reading - Cactus Flower



Director  
Stan Jensen

There will be a social play reading for Cactus Flower on Saturday October 18<sup>th</sup>, at 7:30 PM at 707 Campbell Avenue, Fergus.

### DIRECTIONS

Take Highway # 6 through Fergus (this is St. David St. in Fergus).

At the North end of Fergus on the left side (assuming you are headed north towards Arthur), is a KFC.

The first street past KFC on the left is Black Street. Turn left on Black. The first street on your right is a cul-de-sac, the next one is Parkside and the third street is Woodhill. Turn right on Woodhill. The first street on your left is Campbell Avenue and 707 is the fourth house in on the left.

Bring your beverage of choice and a snack if you want and join the fun.



*Aim for success,  
not perfection.  
Never give up your  
right to be wrong,  
because then you  
will lose the  
ability to learn  
new things and  
move forward with  
your life.*

## ECT Joins EyeGO!

ECT has begun a new venture with *eye-GO to the Arts*, the program that enables secondary students to purchase theatre tickets for \$5.00 (providing they show their student ID, which is then shown when entering the theatre with their ticket).

Although this is a long-term investment in the future of our performing arts organizations, secondary school students are starting to make the theatre one of their first entertainment choices.

An essential element of eyeGO to the Arts is its Youth Council. Currently there are 16 youth on the Council from all areas of the Waterloo/Wellington Regions, including Arthur, Guelph, Elmira, and Kitchener-Waterloo. They help 'sell' the programme to their peers,

work with us to update our marketing materials so that they are attractive to youth and give general suggestions that help our effectiveness.

Joining eye-GO enables us to use their marketing skills and avenues to further promote Elora Community Theatre's productions.

The 2003-2004 season is already listed on their website at [www.eyego.org](http://www.eyego.org), and weekly media releases will also help to promote ECT and the great work we do in this area.

This is a wonderful way to interest students in the theatre, either as a career or hobby.

Share this with your student today!





## Auditions

For those auditioning for *Elora Community Theatre*, the audition form is now available online at [www.eloracommunitytheatre.on.ca](http://www.eloracommunitytheatre.on.ca).

This way you can have it filled in and be ready to go at the audition.

**CACTUS FLOWER by Abe Burrows**  
**Directed by Stan Jensen**  
 (Elora Community Theatre)  
**Show Dates: February 13-15 & 19-21, 2004**

3 Women / 4 Men  
 Several walk-on roles

Sunday, October 26<sup>th</sup>, 1pm - 4pm  
 Monday, October 27<sup>th</sup>, 7:30pm - 10pm  
 Elora Centre for the Arts  
 Rm. 31 - 75 Melville Street (Mill & Melville)

Toni (20-30's) - perky & naive, Julian's girlfriend.

Igor (20-30's) - would be writer, grounded.

Stephanie (30-40's) Julian's receptionist/assistant, very efficient and secretly in love with Julian.

Mrs. Dixon (50+), well-to-do socialite who expects everything her way.

Dr. Julian Winston (30-40's) - Dentist, loves the ladies.

Harvey (30-40's) - lives vicariously through Julian, shallow.

Arturo (40-50's) - South American Diplomat, very smooth with the ladies, even though he is married. Boticelli's Springtime, young, beautiful & shallow. For further info on Boticelli's Springtime, see his painting.

There are also several walk on roles.

We will need several ASM's to make numerous set changes and they could double as extras in the bar and record store scenes.

Please note that this will be adjudicated out of Festival.

**THE TOMORROW BOX by Anne Chislett**  
**Directed by Jane McWilliams**  
 (Galt Little Theatre)  
**Show Dates: February 5-7, 13-15, 20-21, 2004**

3 Women / 2 Men

Sunday, October 26<sup>th</sup>, 1:30pm - 4pm  
 Monday, October 27<sup>th</sup>, 7pm - 9pm  
 Galt Little Theatre (enter via the backdoor)  
 47 Water Street, Cambridge

Two Females (late 20-30's)  
 One Woman (50-60's)  
 One Man (30-40's)  
 One Man (50-60's)

The Tomorrow Box is a story of gaps...the generation gap, the gender gap and the gap between traditionalists and modernists. This delightful play filled with comedy and drama will warm your winter days.

There will be an open read-thru of the play at the theatre on Thursday, October 16<sup>th</sup> at 7pm followed by pub night (located in the theatre). Everyone is welcome.





## Interesting Information

*Chris Mawdsley, Michelle Kreitzer, and John Bigelow* have been cast in *Lost in Yonkers* with Guelph Little Theatre!

### PLAY SUBMISSION & SELECTION

Interested Directors or those who would like to submit a play or idea for the 2004-2005 season, are encouraged to do just that. This is an open call for play submissions and/or ideas.

If you are interested in being on the play selection committee please call or email ECT. We need member participation!

*If you reveal your secrets to the wind you should not blame the wind for revealing them to the trees.*

### GIFT CERTIFICATES

Do your Christmas shopping or Birthday Shopping early! Elora Community Theatre Gift Certificates are now available for this season. Don't just write Aunt Mildred a cheque, write her name on a gift certificate for a ticket or tickets to a show during the 2003-2004 season. She'll love it!

### PROGRAMS

Cactus Flower and the Children's Hour are both in need of assistance in putting together the programs for each show. If you are interested please call or email ECT.

## To Be or Not to Be Literate - Not a Typo!

Aoccdrnig to a rscheearch at Cmabrigde Uinervtisy, it deosn't mttar in waht oredr the ltteers in a wrod are, the olny iprmoetnt tihng is taht the frist and lsat ltteer be at the rghit pclae.? The rset can be a total mses and you can sitll raed it wouthit porbelm.? Tihs is bcuseae the huamn mnid deos not raed ervey lteter by istlef, but the wrod as a wlohe.

Amzanig huh?



## Workshops

### STAGE FIGHTING

Tony Wolfe, Cultural Fighting Styles Designer for Newline Cinema's Lord of the Rings Trilogy and Founder of New Zealand Stage Combat Society.

October 18-19, 2003. 10am - 5pm  
Rapier Wit Studios  
575 Wellington Street West, Toronto  
Cost is \$428 (includes GST)

To Register call Daniel Levinson at 416-534-1947 or email [Daniel@rapierwit.com](mailto:Daniel@rapierwit.com) website [www.rapierwit.com](http://www.rapierwit.com)

### SHAKESPEARE ANALYSIS

Leslie Marshall, Former University of Guelph English professor with extensive experience as an actor and director.

October 25 & November 1<sup>st</sup>, 10am - 3pm  
Guelph Little Theatre  
176 Morris Street, Guelph  
Cost \$20 (lunch included)

To Register contact Dianne at 836-8051 - leave a return phone number.